



青岛晟源达威机械有限公司

QINGDAO SAINTYOL DAWIN MACHINERY CO.,LTD

混凝土搅拌解决方案专家



CONCRETE MIXING  
solution expert

混凝土搅拌解决方案专家  
CONCRETE MIXING  
solution expert

 青岛晟源达威机械有限公司  
QINGDAO SIANTYOL DAWIN MACHINERY CO.,LTD

目录 Contents

致辞 COMPLIMENT	
企业荣誉 ENTERPRISE HONOR	
企业简介 BRIEF INTRODUCTION	
发展历程 DEVELOPMENT HISTORY	
混凝土搅拌站（楼）	
环保型搅拌站.....	01-02
环保型搅拌楼的技术特点.....	03-06
商品混凝土搅拌站.....	07-10
选择新型建机搅拌站的十大优势.....	11-14
移动式混凝土搅拌站	
拖挂式移动搅拌站.....	15-16
模块式移动搅拌站.....	17-18
移动式搅拌站的技术特点.....	19
选择新型建机移动式搅拌站的优势.....	20
搅拌机	
CTS双卧轴强制式搅拌机.....	21
MP立轴行星式搅拌机.....	22
控制系统	
HZS砼搅拌站控制系统.....	23
HZS电器控制系统.....	24
砂石分离机及浆水回收设备	
混凝土回收设备前景展望.....	25
砂石分离机型号及回收流程.....	26-32
干混（粉）砂浆生产设备	
塔楼式干粉砂浆生产线.....	33
阶梯式干粉砂浆生产线.....	34
车间式干粉砂浆生产线.....	35-36
单卧轴混合机.....	37
双卧轴混合机.....	38
控制系统的特点.....	39-40
配套设备.....	41
干粉罐.....	42
发货区 THE DISPATCH AREA	
工程案例 ENGINEERING EXAMPLE	
世界服务网络 GLOBAL NET SERVICE	
售后服务承诺 SERVICE PROMISE	



2HZS180八角楼



2HLS240搅拌楼

### HZS(N) 系列混凝土搅拌站主要技术参数 Main Technical Parameter of

### Concrete Mixing Plant HZS(N) Series

型号 Model	HZS60	HZN60		HZS90	HZN90	HZS120	HZS180(150)	HZS240(200)	
理论生产率Theoretical Productivity(m³/h)	60	60		90	90	120	180(150)	240(200)	
搅拌主机Mixer	JS1000	MP1000		JS1500	MP1500	JS2000	JS3000	JS4000	
配料系统Batching System	PLD1600	PLD1600		PLD2400	PLD2400	PLD3200	PLD4800	PLD6400	
卸料高度Discharging Height(mm)	4100	4840		4100	4100	4100	4100	4100	
骨料最大粒径The Max.Diameter of the Aggregates(mm)	60(80)	60(80)		60(80)	60(80)	60(80)	60(80)	60(80)	
自动循环周期Automatic Cycle Period(s)	60	60		60	60	60	60(72)	60(72)	
骨料计量精度Weighing Precision of Aggregate	±2%	±2%		±2%	±2%	±2%	±2%	±2%	
水泥计量精度Weighing Precision of Cement	±1%	±1%		±1%	±1%	±1%	±1%	±1%	
水计量精度Weighing Precision of Water	±1%	±1%		±1%	±1%	±1%	±1%	±1%	
外加剂计量精度Weighing Precision of Additive	±1%	±1%		±1%	±1%	±1%	±1%	±1%	
整机功率Power(KW)	106	114		145	145	175	215	295	



## 环保型搅拌站技术特点

ENVIRONMENTALLY FRIENDLY TECHNICAL CHARACTERISTICS OF THE MIXING PLANT



2HZS240八角楼

混凝土搅拌楼是我公司吸收各种型式搅拌站的优点和先进技术，结合本公司多年生产混凝土搅拌设备的理论和实践经验而自行开发的大型混凝土搅拌设备，它由智能物料输送存储系统、计量系统、搅拌系统、电气控制系统、摄像监视系统和钢结构等组成。可广泛用于道路、桥梁、水坝、机场、港口等大型工程及城市商品混凝土等需求量大的场所。

Concrete Mixing Building is a large concrete mixing equipment, absorbing various types of our mixing station advantages and advanced technology, based on many years' experience in the theory and practice of our company in producing concrete mixing equipment. It consists of intelligent material conveying storage system, metering system, mixing system, electric control system, video monitoring system and steel structure. It can be widely used in roads, bridges, dams, airports, ports and other large projects and city commercial concrete projects.

## 设备的主要组成部分的特点：

THE MAIN PARTS' CHARACTERISTICS

该搅拌楼采用计算机优化设计，系统配置先进，模块化程度高，布局合理，安装调试方便，能满足不同用户对混凝土搅拌楼的各种需求。上置式骨料储存计量系统，大大提高了设备的生产率；控制系统主要部件采用国际名牌进口元件，工作可靠、性能稳定，计量精确；完善的工业设计、周详的人机工程学处理，使该楼结构独特、造型美观、环保性能优良、操作舒适、维修方便。

The mixing building adopts computer optimization design, advanced system configuration, high degree of modularization, reasonable layout, convenient installation and debugging, which can meet the needs of different users to the concrete building. Overhead type of aggregate storage measurement system greatly improves the productivity of the equipment. The main components of the control system adopt international famous brand of imported components. It assures the reliable work, stable performance and accurate measurement. Perfect industrial design and thorough ergonomics processing make it unique structure, beautiful appearance, excellent environmental performance comfortable operation and convenient maintenance.

1 设备第一层是混凝土结构，控制室、外加剂室、空压机室都置于主楼内，墙壁采用隔音材料，使得控制室噪音极小，办公环境优良；外加剂室内存储，利于冬季保温，防止外加剂结晶，影响混凝土的质量。

The first layer is the concrete structure. Control room, additive room, air compressor room are placed inside the main building. The walls adopts the insulation materials, which makes the control room low noise and excellent office environment. Admixtures for indoor storage suits for winter heat preservation, prevents admixture crystallization, and assures the quality of concrete.

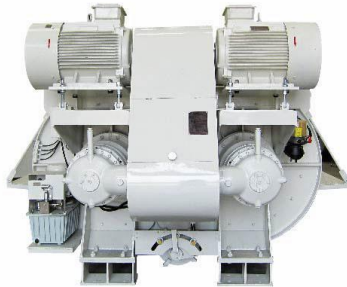




## 设备的主要组成部分的特点: THE MAIN PARTS' CHARACTERISTICS

- 2 第二层是主机平台：使用CO-NELE公司生产的CTS6000/4000强制式搅拌主机，其采用轴装式减速机的传动方式，用两台功率为55KW电动机驱动，减少主机的震动及噪音。搅拌筒内衬板和叶片采用耐磨合金材料制造，保证衬板、叶片的耐磨损、抗冲击性能。搅拌臂采用流线型设计，通过合理布置，使搅拌臂形成断续的螺旋带型式，搅拌性能强，搅拌均匀、迅速，生产率高，骨料最大粒径可达80mm。对于干硬性、塑性及各种配比的混凝土均能达到良好的搅拌效果。搅拌机衬板及搅拌叶片经特殊处理，独特的轴端支承及密封形式极大的提高了主机的使用寿命。

The second layer is host platform. It adopts the CTS6000/4000 forced concrete mixer produced by CO-NELE and it adopts the shaft mounted speed reducer to convey. Two motors with 55KW reduce the vibration and noise of the host. The scale board and paddle in the mixing tank are made of wear resistant alloy material, which assures the abrasion resistance and impact resistance. The mixing arm adopts the streamline design and reasonable layout makes intermittent spiral pattern, high mixing performance, rapid mixing speed and high productivity with the maximum aggregate diameter 80mm. It can reach a good stirring effect for dry, plastic and various ratio of concrete. Scale board and paddle is handled by special treatment. The special shaft bearing and sealing greatly improves the life of the host.



- 3 第三层是计量、除尘层：在该层装有电子称量的骨料称、水泥称、粉煤灰称、水称和液体外加剂称；传感器采用国际知名品牌，精度高，工作可靠；所有计量都采用粗精称方式，保证计量精度。除尘系统能保证所有的物料，从上料、配料、计量、加料至搅拌出料各环节都在密闭状态下进行，可最大限度降低粉尘的污染，环保性能优良；另外，骨料的计量采用两个计量斗，分两次投放骨料，采用独特的裹石法工艺，提高生产率的同时，提高了混凝土的质量，降低了主机衬板的磨损，降低了启动电流。

The third layer is measure system and de-dusting system. It consists of electric weighing aggregate, cement weighing, fly-ash weighing, water weighing and liquid additive weighing. The sensor adopts the international famous brand to assure high precision and reliable work. The measuring system uses the coarse and fine scale to assure the measuring accuracy. Dust removal system can assure all the materials processed in closed state from feeding, batching, measuring, charging and mixing material to minimize dust pollution and have excellent environmental performance. Besides, the aggregates' measurement adopts two weighing hoppers, twice on putting the aggregates. The unique coating process improve the concrete's quality, reduce the machine board's abrasion, and reduce the startup current.

- 4 第四层是骨料储存层：该层有骨料分料器、骨料储存仓、卸料闸门等组成。骨料分料器设有位置检测开关和摄像监视器，操作方便、灵活、直观；骨料储存仓置于整个外包装内，不受雨水的影响，保证配比的稳定性和连续性。The fourth layer is the aggregate storage layer. This layer consists of the aggregate spreader, aggregate storage bin and discharge gate. There's position detecting switch and video monitor, which makes the operation convenient, flexible, and intuitive. The aggregate storage bin is in the outer package, which is not affected by the rain to ensure the stability and continuity of proportion.

HZS(N)

2HZS(N)

YHZS

CTS

MP

GSW

- 5 粉料输送系统：使用气浮溜槽进行粉料输送，相较于螺旋输送机，使用气力输送其输送量更大，无噪音产生，故障率低易于检修，更可以有效减少电力的消耗。

Powder conveying system: Compared with the screw conveyor, flotation chute powder conveying by pneumatic conveying makes the delivery volume larger without any noise. Besides, there's low fault rate and easy maintenance, it can reduce the power consumption.



- 6 皮带机全包封，避免了上料过程中粉尘和噪音的产生，更环保。

The belt machine is full sealed, which can avoid noise and dust on the material in the process of production. It is more environmental protected.



- 7 电气系统。全部采用西门子或施耐德等著名品牌，工作更稳定可靠，使用寿命更长。

The electrical system fully adopts the Siemens or Schneider and other famous brands, which is more stable and reliable to work with long service life.





2HZS180



2HZS120

## 2HZS(N) 系列混凝土搅拌站主要技术参数 Main Technical Parameter of

## Concrete Mixing Plant 2HZS(N) Series

型号 Model	2HZS60	2HZN60	2HZS90	2HZN90	2HZS120	2HZS180(150)	2HZS240(200)
理论生产率Theoretical Productivity(m³/h)	2×60	2×60	2×90	2×90	2×120	2×180(150)	2×240(200)
搅拌主机Mixer	2×JS1000	2×MP1000	2×JS1500	2×MP1500	2×JS2000	2×JS3000	2×JS4000
配料系统Batching system	PLD1600	PLD1600	PLD2400	PLD2400	PLD3200	PLD4800	PLD6400
卸料高度Discharging height(mm)	4100	4840	4100	4100	4100	4100	4100
骨料最大粒径The max.diameter of the aggregates(mm)	60(80)	60(80)	60(80)	60(80)	60(80)	60(80)	60(80)
自动循环周期Automatic cycle period(s)	60	60	60	60	60	60(72)	60(72)
骨料计量精度Weighing precision of aggregate	±2%	±2%	±2%	±2%	±2%	±2%	±2%
水泥计量精度Weighing precision of cement	±1%	±1%	±1%	±1%	±1%	±1%	±1%
水计量精度Weighing precision of water	±1%	±1%	±1%	±1%	±1%	±1%	±1%
外加剂计量精度Weighing precision of additive	±1%	±1%	±1%	±1%	±1%	±1%	±1%
整机功率Power(KW)	212	228	290	290	350	430	590





2HZS180



HZS180(气吹输送粉料)



2HZS180水筒楼



2HZS180搅拌楼



2HZS240

2HZS180

2HZS120



2HZS120



主楼整体钢底盘  
The main building steel whole chassis水泥仓整体钢底盘  
Cement silo steel whole chassis

## 选择新型建机搅拌站的十大优势 (1~5)

Ten advantage for selecting XINXING Construction Machinery concrete mixing plant (1~5)

### 1. 优良的搅拌性能

搅拌主机采用德国技术。搅拌性能强，搅拌均匀、迅速，生产率高。对于干硬性、塑性及各种配比的混凝土均能达到良好的搅拌效果。

#### Excellent mixing performance

Mixer consoles with the German technology. Strong mixing performance, mix homogeneous and rapid, high productivity. For dry, rigid, plastic and all kinds of concrete proportion of all can reach the good mixing effect.

### 2. 高度的可靠性能

控制系统的所有电器元件均采用进口元件，大大的降低了设备的故障率。

#### Highest reliable performance

All electrical components of the control system are imported components, greatly reduce the equipment failure.

### 3. 独特的不粘轴技术

通过对搅拌臂、搅拌叶片、物料投料点位置、物料投料次序等零部件及动作的独特设计和合理分配，解决了混凝土粘轴这一难题，减轻工人的劳动强度。

#### Unique no-sticky shaft technology

Through the unique design and reasonable allocation of the mixing arms, mixing vanes, material feeding points, material feeding order etc parts and movements, solve the concrete sticky shaft problem, also reduce the labor intensity.

### 4. 精确的计量精度

采用微机加仪表的控制方式，计算速度快、响应时间短；配合专利技术的点动补料及自动扣称功能，使计量精度在动态时达到并超过国家计量标准。

#### Accurate measurement accuracy

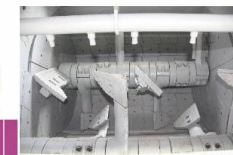
Adopt computer and meter control mode, fast calculation speed, short response time; Cooperate with the patented technology of clicking point filling and automatic buckle says function, make measurement accuracy achieves dynamic and more than national measurement standards.

### 5. 完美的工业设计

整机造型美观大方、结构布局合理、色彩怡人、操作更舒适、维修更方便。严密的逻辑思维、深刻的设计理念、周详的人机工程学处理和精致的细节设计是优秀产品的保障。

#### Accurate measurement accuracy

Beautiful and easy modeling, reasonable structure, pleasant color, comfortable operation, maintain convenient, strict logical thinking, profound design concept, thorough ergonomics processing and delicate details of the design is the guarantee of excellent products.

轴端密封  
Shaft sealing搅拌装置  
Mixing device全自动油脂润滑  
Automatic grease lubrication



YHZS120 (模块站)

一层水箱、外加剂箱, 二层控制室、调度室  
split type cement silo, Additive silo, Control room分体式水泥仓 (片仓)  
Split type cement silo

## 选择新型建机搅拌站的十大优势 (6~10)

Ten advantage for selecting XINXING Construction Machinery concrete mixing plant (6~10)

### 6. 方便的转场安装

整体结构为模块式。配料机、皮带输送机、主体、螺旋输送机均为独立结构, 转场时拆卸、安装迅速, 运输方便、快捷。

#### Convenient transportation and installation

The overall structure for module type. Batching machine, belt conveyor, main structure, screw conveyor are independent institutions, also remove, installation quickly and transportation is convenient, fast.

### 7. 简捷的操作性能

整机采用计算机控制, 即可自动控制, 也可手动操作, 操作简单, 易于掌握。

#### Simple operating performance

The machine adopts computer control, can be automatically control, also manual operation, simple operation, easy master.

### 8. 良好的维护性能

每个保养、维修部位都设有走台或梯子, 直接可视且有足够的操作空间。站的全封闭或半封闭装备, 保证了所有作业都可以风雨无阻的进行。

#### Good maintenance performance

Each maintenance, repair parts have walk plate form or ladder, directly vision and adequate operation space. Plant is fully or semi enclosed equipment, guarantee all assignments can avoid rain or shine.

### 9. 优秀的环保性能

所有的粉状物料都在密封状态下进行。全封闭结构极大的降低了粉尘和噪音对环境造成的污染; 可根据客户需要配置粉料仓集中除尘系统和沙石、污水处理回收系统, 真正做到了零排放和无污染。

#### Excellent environmental protection performance

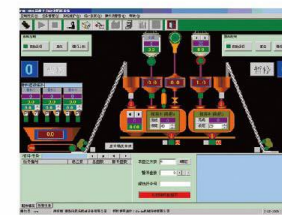
All of the powder material is in sealed state. Fully closed structure greatly reduce the dust and the noise pollution of the environment, according to your needs, set power house centralized deducting system, sand, waste water reclaim system, truly zero emissions and no pollution.

### 10. 可设电视监视系统

可设若干点电视监视器 (一般为四点), 对配料机、混凝土搅拌机出料口等进行实时监控。

#### TV monitoring system

According to user's request, can put some TV monitor (usually four points), to batching machine, concrete mixer and discharging mouth to make real-time monitoring.





## 拖挂式移动搅拌站

HAULING MOBILE MIXING PLANT



该系列搅拌站采用半拖挂式设计。自带行走系统与标准牵引销。用一个车头即可将搅拌站拖走。结构紧凑，架设快捷，免基础、免调试，从安装到使用只需一天时间。为了便于长途运输，可以将搅拌站拆分为几个标准模块，装入集装箱内。该产品获得国家发明专利，专利号：200810172273.9

This series of mixing plant adopts the semi-pulling structure with running system and standard coupling pin included. It can be dragged by a tractor. Without foundation and commissioning enables convenient movement and quick installation. It only takes one day from installation to use. To be convenient for long distance transportation, the mixing plant can be divided into several standard modules, and then be packed into containers. It has been applied for the National Invention Patent and has been accepted. The application no.is 200810172273.9

HZS(N)

2HZS(N)

**YHZS**

CTS

MP

GSW

## 拖挂式移动搅拌站

HAULING MOBILE MIXING PLANT



### YHZS 系列混凝土搅拌站主要技术参数 Main Technical Parameter of Concrete Mixing Plant YHZS Series

型号 Type	YHZS25	YHZS35	YHZS50	YHZS75	YHZS100
理论生产率 Theoretical Productivity	25	35	50	75	100
搅拌主机 Mixer	JS750/500	JS1250/750	JS1500/1000	JS2250/1500	JS3000/2000
配料系统 Batching System	PLD800	PLD1200	PLD1600	PLD2400	PLD3200
卸料高度 Discharging Height(m)	4.0	4.0	4.0	4.0	4.0



## 模块式移动搅拌站

MODULAR MOBILE MIXING PLANT



该系列搅拌站采用模块式设计，移动灵活，组装方便、快捷，免特殊基础，免调试。从安装到使用只需三至五天时间。控制室、化验室、维修室一应俱全，节省成本，是工程施工的理想设备。为了便于长途运输，可以将搅拌站拆分为几个标准模块，装入集装箱内。该产品获得国家发明专利，专利号：200810172273.9

The modular design without foundation and commissioning enables convenient and quick installation. It only takes three to five days from installation to run the plant. All necessary facilities such as: control room, laboratory and maintenance room are equipped. Cost effective. An ideal choice for engineering. To be convenient for long distance transportation, the mixing plant can be divided into several standard modules, and then be packed into containers. It has been applied for the National Invention Patent and has been accepted. The application no. is 200810172273.9

HZS(N)

2HZS(N)

**YHZS**

CTS

MP

GSW

## 模块式移动搅拌站

MODULAR MOBILE MIXING PLANT



### YHZS 系列混凝土搅拌站主要技术参数 Main Technical Parameter of Concrete Mixing Plant HZS Series

型号Type	YHZS40	YHZS60	YHZS90	YHZS120	YHZS180
理论生产率 Theoretical Productivity	40	60	90	120	180
搅拌主机 Mixer	JS1250/750	JS1500/1000	JS2250/1500	JS3000/2000	JS4500/3000
配料系统 Batching System	PLD1200	PLD1600	PLD2400	PLD3200	PLD4800
卸料高度 Discharging Height(m)	4.0	4.0	4.0	4.2	4.2

## 移动式搅拌站的技术特点

### TECHNICAL CHARACTERISTICS OF MOBILE MIXING PLANT

- 1** 采用性能优良的双卧轴强制式搅拌机作配套主机。具有搅拌速度快，搅拌范围广，砼质量高等显著优点。可以最大程度满足不同用户需求。  
Adopt twin-shaft compulsory concrete mixer as the assorted mixer, which has obvious characteristics like fast mixing, wide mixing range and good quality concrete, etc to satisfy the customers' requirement.
- 2** 采用获得国家专利的自动补料（专利号ZL200520022852.7）技术，保证动态计量精度 $\pm 1\%$ 。  
Adopt the technology of "click to supplement", which has been awarded the national patent ( Patent No.ZL200520022852.7 ), to ensure the accuracy of dynamic measurement no more than  $\pm 1\%$ .
- 3** 采用获得国家专利的外加剂计量秤气力输送装置（专利号：200820134501.9）计量与输送外加剂，彻底避免由于外加剂系统失灵造成的砼质量事故。  
Adopt additive weighing scale pneumatic conveying equipment, applied for national patent, to measure and convey additives, which completely avoid the quality accident caused by the failure of additive system.
- 4** 配备触摸屏，微机，两套操作系统，手动，半自动，自动三种工作方式。保证设备运行可靠。  
Assemble two suits operating devices (touch-screen and computer), and can be operated manually, semi-automatically and automatically, which ensures the working reliability.
- 5** 全面考虑混凝土工艺要求，功能一应俱全。独具配比储存，落差自动补偿，砂石含水率自动补偿，欠秤，超秤报警修正，配方在线修改，数据保存，查询，报表，打印等功能。  
The fully accounted concrete technology enable perfect functions like: unique ratio deposit, self compensation of aggregates drop, scale-owing, alarming and revising of over-scale, on-line modifying formula, data saving and query, and report-print and so on.
- 6** 采用航空快速插头，出厂预调试，保证安装，调试迅速可靠。  
Use pre-debugged air plugs to ensure quick installation and commissioning.

## 选择新型建机移动式搅拌站的优势

### THE ADVANTAGES FOR SELECTING XINXING MOBILE MIXING PLANT

- 1** 结构紧凑、功能齐全 Compact structure and all ready functions  
主设备集储料、计量、输送、搅拌、控制于一体，结构紧凑，功能齐全  
Plant of this model is a combination of storing, weighing, transporting, mixing and controlling. It has features of compact structure and all ready functions.
- 2** 移动方便 Convenient movement  
采用模块式设计方式。移动灵活、方便  
Adopting modular structuring way enables convenient movement.
- 3** 安装快捷 Quick installation  
免特殊基础，免调试，即装即用。最大限度节省安装调试时间  
Ready to run without special foundation and commissioning, which can save installation and commissioning time.





## CTS双卧轴强制式搅拌机 CTS TWINSHAFT CONCRETE MIXER



### 我公司生产的搅拌机是具备欧洲搅拌机的独有特性:

- 1、搅拌机整体设计紧凑，所有零部件都安装在搅拌筒上，占用空间较小，便于整机安装及更新。
- 2、采用双浮动油封环及特制的密封件与高压油脂相结合结构，延长了轴端密封使用寿命。
- 3、搅拌臂轴向及径向均为流线型，使物料搅拌更剧烈，短时间达到混凝土的均质状态，且由于搅拌装置设计独特，提高了水泥利用率。
- 4、衬板、叶片采用高锰钢制造，使用寿命长。
- 5、选配高压清洗装置、稠度测试仪。

### Our mixer absorbs the international advanced technology and has unique performance of European mixer.

1. The structure of the mixer is designed compactly, and all parts are fixed on mixing tank, which can save space and be installed and replaced easily.
2. Combined double floating seal and unique seal with high pressure grease, this configuration can expand useful life.
3. The mixing arm is streamline in axial and in radial direction which ensures fast mixing speed and can reach to the homogeneity quickly. Meanwhile, the unique designed structure can improve the utilization rate of cement.
4. Scale board and paddle are made of manganese steel, which extends the useful life greatly.
5. High pressure cleaning device, consistence probe are optional.

## CTS 双卧轴强制式搅拌机主要技术参数

型号 Model	CTS1500/1000	CTS2250/1500	CTS3000/2000	CTS4500/3000	CTS6000/4000
进料容量L (Feeding Volume)	1500	2250	3200	4500	6000
出料容量L (Compacted Concrete, per Batch)	1000	1500	2000	3000	4000
电机功率Kw (Power)	37	2 × 30	2 × 37	2 × 55	2 × 75
重量Kg (Weight)	5500	6500	7600	9800	13000

## MP立轴行星式搅拌机

MP PLANETARY CONCRETE MIXER



### 我公司生产的搅拌机是具备欧洲搅拌机的独有特性:

- 1、结构紧凑、传动平稳、性能卓越、经济耐用。
- 2、传动系统采用行星减速传动。电机与减速机之间采用弹性联轴器连接，减速机输出轴通过花键套与行星架连接，行星架将动力分成两部分，一部分带动刮板臂转动，另一部分经行星轴传递给搅拌臂。从而使搅拌运动既有公转又有自转，搅拌运动轨迹复杂，搅拌运动强烈，功效高，损耗小，搅拌质量均匀。
- 3、安装、维修方便，不存在漏浆问题。
- 4、选配德国BIKOTRONIC温度测试仪，湿度测试仪，确保高性能混凝土及混凝土预制件的质量。

### Our mixer absorbs the international advanced technology and has unique performance of European mixer.

1. It has characteristics of compact structure, steady driving, excellent performance, low investment and high quality.
2. The planetary gearing is used in gearbox. The motor and gearbox are connected by elastic coupling, the output axis of gearbox and the planetary frame are connected by resilient shaft coupling. Power is divided into two branches by rotor, One branch drives the scraper arm and the other drives the mixing arm by planetary axis. The mixing track is not only revolution but also rotation. The track is complex, and the mixing is turbulent, The JN mixer has higher efficiency, lower loss and perfect mixing quality.
3. It is easy to install and maintain, without leaking.
4. To ensure the high performance of concrete and quality of concrete prefabricated products, the BIKOTRONIC humidity and temperature sensor made in Germany can be equipped.

## MP 立轴行星式搅拌机主要技术参数

型号 Model	MP375/250	MP500/330	MP750/500	MP1125/750	MP1500/1000	MP2250/1500	MP3000/2000	MP3750/2500	MP4500/3000
进料容量L (Feeding Volume)	375	500	750	1125	1500	2250	3000	3750	4500
出料容量L (Compacted Concrete, per Batch)	250	330	500	750	1000	1500	2000	2500	3000
搅拌额定功率Kw (Mixing Power)	11	15	18.5	30	37	55	75	90	110
液压卸料功率Kw (Discharging Power)	2.2	2.2	2.2	2.2	3	3	4	4	4
重量Kg (Weight)	1200	1700	2000	3500	6000	7000	8500	10500	11000



# HZS 砼搅拌站控制系统

ELECTRIC CONTROL SYSTEM



## HZS电器控制系统

### 【软件特点】

自行研发的控制软件，全面考虑混凝土的工艺要求，非常贴和生产现场的各种实际情况，功能一应俱全：

- 1、配料过程以及参数同一画面显示，在线修改。
- 2、配方存储量任意设置，可选择多个配方，任意切换，配方值在线修改。
- 3、采用双速喂料、落差自动补偿，保证每盘计量精度。
- 4、含水率、开关门时间等参数可以在线修改。
- 5、系统对主要参数具有智能检测功能，防止由于输入错误引起的误动作。
- 6、本系统按照双机双控设计，可以根据需要选择控制方式。
- 7、数据查询、报表打印功能齐全。

### 【硬件特点】

- 1、主要电气件采用世界著名品牌（法国施耐德产品）：质量优胜，性能可靠。
- 2、采用研华工业控制机、输入输出卡，适应环境能力强，是安全生产的保障。
- 3、美国托利多传感器、仪表，数据传输、处理性能稳定可靠，操作省心，用起来放心。
- 4、精心设计的操作台，贴和人体构造特点，工作起来顺心、贴心。
- 5、各种保护一应俱全，维护简便、调试直观、操作安全。

## HZS ELECTRIC CONTROL SYSTEM

### 【Software Characteristic】

The control program is developed by ourselves according to requirements of concrete performance, and adhered to practical situation of production process, with all kinds of functions.

1. Batching process and parameter are displayed on the same interface, and can be modified online.
2. Freely setup the amounts of storage prescription. You can choose several prescriptions at the same time, shift them freely and modify the data online.
3. Adopt the technology of double speed feeding and automatic fall compensation so as to ensure weighing precision of each batch.
4. The parameter such as rate of water content, interval between door opening and closing, can be modified online.
5. The system can inspect main parameters intelligently, so it will prevent some mistakes caused by mistake input.
6. There is double-computer and double-control mode, so you can choose any control.
7. The system has perfect functions of data finding and printing.

### 【Hardware Characteristic】

1. The electric parts we chose are famous international brand Schneider, with high quality and reliable performance.
2. The industry control computer and A/D card are made by Yanhua, and have good performance with environment, which can ensure safety in production.
3. The sensor and meter which are made by American Toledo have a reliable performance on inputting and dealing with data. Meanwhile, it is easy to operate them and safe to use.
4. The console is designed elaborately which suits body structure, So you would feel comfortable and happy during work.
5. Excellent protection makes maintenance and debugging easy and safe operation.

## 混凝土回收设备前景展望

### CONCRETE RECYCLING EQUIPMENT PROSPECT

随着商品混凝土的飞速发展，每年排放的商品混凝土废弃物也在逐年增加。而这些混凝土废弃物的处理方法一般是运往郊外露天堆放或填埋。这样不仅占用了大量土地，且造成严重的环境污染，另外也是资源的大量浪费。为彻底解决混凝土搅拌站每天冲洗搅拌机、运输车造成的废水排放问题，青岛新型建设机械有限公司经过多年的研发设计了搅拌站必备的“新型”砂石分离机。砂石分离机可以与浆水回收系统组合完成搅拌站生产的砂石、污水零排放的最终环保目标。

With the rapid development of concrete products, the concrete waste discharge also increases year by year. And these concrete waste treatment method is generally delivery to suburban or landfill. So not only takes up a lot of land, and cause serious environmental pollution, in addition is also significant waste of resources. To thoroughly solve the concrete mixing plant washing mixer, the waste water discharge problems caused by truck, Qingdao XINXING construction machinery Co., LTD. After years of development, design the concrete plant necessary "XINXING" brand Concrete Reclaimer. Concrete Reclaimer can combine with sewage water recycling system can complete sandstone, sewage zero discharge final environmental goals.

#### “新型”砂石分离机产品优点

- 1、体积小功率小，流程简单化，设备占地面积小。
- 2、高性能处理方式，骨料冲洗彻底，用水量少。
- 3、污水、废料全面回收利用，实现零排放，大大节省资源，降低环境污染。
- 4、操作简单，手动、全自动切换控制，降低了人力物力。
- 5、机器方向、洗车台数，可依现场地形做变化。
- 6、独特的轴头、轴承装置，延长使用寿命。

#### "XINXING" brand Concrete Reclaimer Advantages

1. Small volume, small power, simple process, equipment cover small area.
2. High performance process method, aggregate thoroughly washing, less water consumption.
3. Sewage and waste comprehensive recycling, realize zero emissions, save resources, reduce the environment pollution.
4. Simple operation, manual, automatic switch control, reduces manpower.
5. Machine direction, car wash numbers can make change according to condition.
6. The unique shaft head, bearing device, prolong service life.

## 砂石分离机

### DRY MORTAR MIXING PRODUCTION EQUIPMENT

砂石分离机又叫混凝土砂石分离机或混凝土砂石分离浆水回收设备，是混凝土回收系统的核心设备，主要用于将清洗罐车的污水及残留混凝土中的砂石清洗分离及回收再利用。

Concrete reclaimer also called concrete reclaiming and slurry recycling equipment, is the core equipment in concrete recycle system. It is mainly used in washing, reclaiming and recycling the sand and stone left in sewage and residual concrete after cleaning the tanker.

#### ★ 第一代THS10型砂石分离机

#### The First Generation THS10 Concrete Reclaimer

#### 特点 / Features

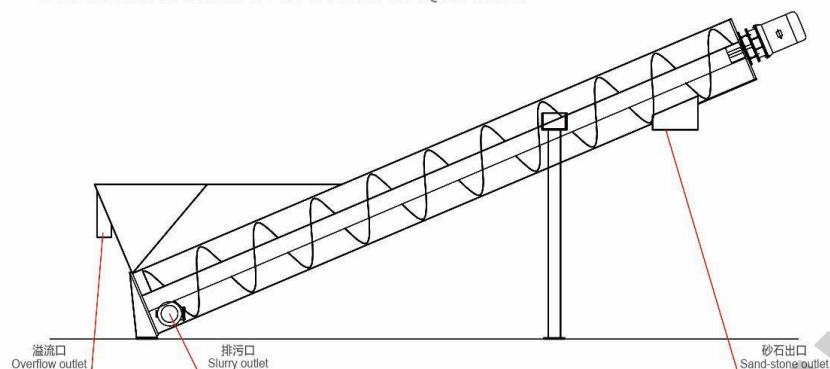
结构紧凑，通过一个螺旋分离机同时实现清洗和筛分，可有效的节约占地面积，免基础设计，性价比高，同时也减少了故障点，便于维护保养。

Compact structure, washing and reclaiming work are made in the same time through a spiral separator to save the floor area and avoid foundation design. So it has a high cost-effective function, meanwhile reduces the fault point and is convenient for maintaining.

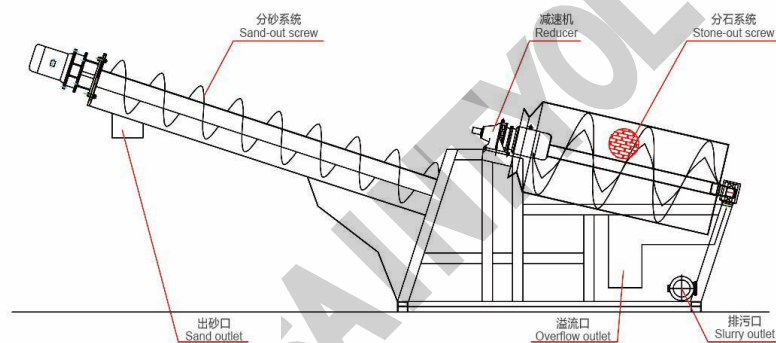


## 砂石分离机

DRY MORTAR MIXING PRODUCTION EQUIPMENT



THS10简易型砂石分离机  
THS10 Simple concrete reclaimer



THS20标准型砂石分离机  
THS20 Standard concrete reclaimer

## 砂石分离机

DRY MORTAR MIXING PRODUCTION EQUIPMENT

### ★ 第二代THS20型砂石分离机

The Second Generation THS20 Concrete Reclaimer

#### 特点 / Features

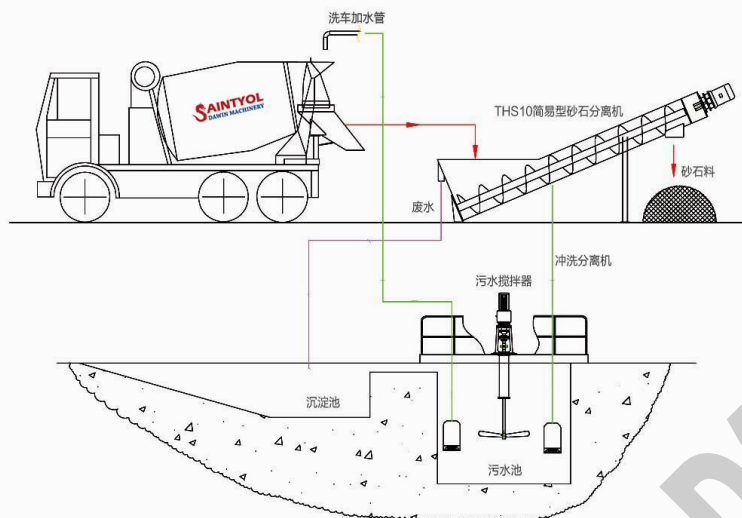
砂石一次性分离，可满足各种不同类型的搅拌车，加长分砂螺旋，出砂含水率低。

Sand and stone are reclaimed in one time by this equipment; it can be applied to various kinds of mixing truck. It is matched with a much longer separating screw. The sand reclaimed is in low moisture content.

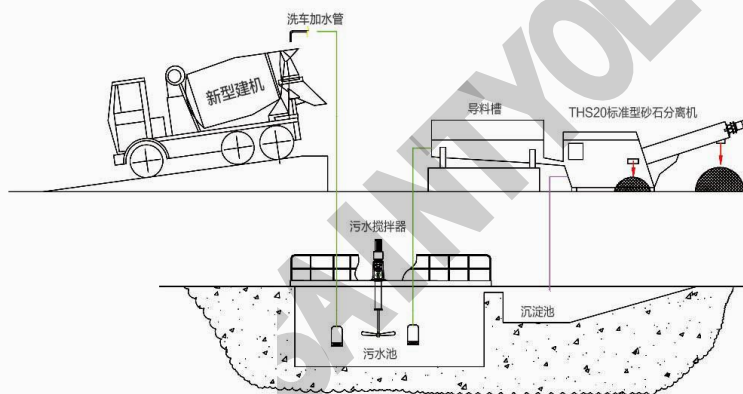




THS10简易型砂石分离机回收流程



THS20标准型砂石分离机回收流程



## 砂石分离机

DRY MORTAR MIXING PRODUCTION EQUIPMENT

### ★ 第三代ZSF30型砂石分离机

The Third Generation ZSF30 Concrete Reclaimer

#### 特点 / Features

独特的筛网锥度鱼鳞孔设计、出石口设计、溢水槽的位置设计，并配有自动高压喷淋管，是搅拌站最理想的环保节能产品。

The position of the overflow tank design, and equipped with automatic high pressure spray pipe, is the most ideal mixing plant of environmental protection and energy saving products.



#### 产品优点 Product Advantages

- 结构简单，维护维修方便，整个产品功能实现全部为同轴机械传动式，维护维修简单。一般产品为两级分动形式，结构复杂。
- 筛网为锥度鱼鳞孔，加上高压喷淋管的设计，可以使网眼堵塞自动清理，彻底解决了分离机的堵塞问题。
- 故障率低，该设备所有动力都来自一套电机减速机实现（一般产品为两套）；
- 分离能力高，产品滚筒直径1.25米，一般产品为0.8米左右；设计分离能力40吨/小时，一般产品为不超过20吨/小时；（分离能力主要考虑当洗站时装载机的一次性集中投放干料考虑）
- 分离物料清洁度高，分离机下部1/3高度始终满水，也就是说石子和砂子都是经过水洗的，表面清洁度高。出砂模式为滤网水捞式，一般产品螺旋输送机挤压出砂，含有大量灰浆。
- 整机出料装载机铲运无干涉。（普通产品出砂扬臂在装载机铲运砂子时容易出现碰臂事故）

## DRY MORTAR MIXING PRODUCTION EQUIPMENT

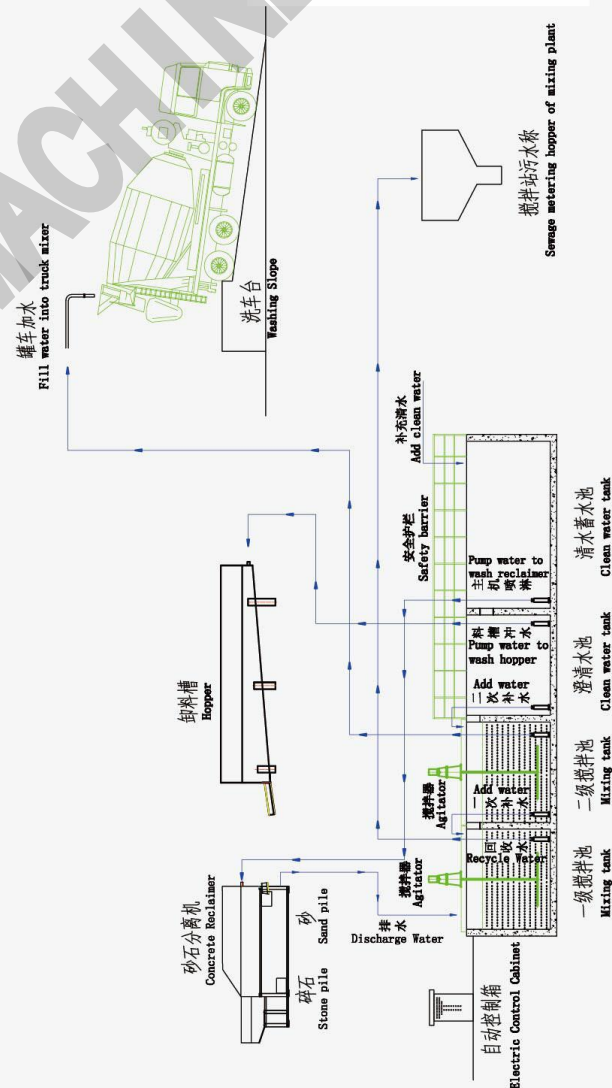
## Product Advantages

- Sample structure, easy maintenance, and the realization of the product function is in form of coaxial mechanical drive and maintenance is simple. The other general products are in two-stage dynamic form, with complex structure.
- There are taper scales hole on the screen, with the design of high pressure shower pipe, the blocking can be cleaned automatically, so the blocking problem of reclaimer is resolved thoroughly.
- Low failure rate; the whole power of this equipment is supplied by a set of motor reducer. (the general products take two sets)
- High reclaiming ability; the diameter of cylinder is 1.25 m, which of the general products is about 0.8 m; the predicted reclaiming capacity of this equipment is 40 t/h, which of the general products is less than 20 t/h. (Reclaiming capacity is mainly depended on the quantity of drier put in by loader in once when cleaning plant)
- The reclaimed material is in high cleanliness. 1/3 height of the reclaimer bottom is full of water at any time which means that sand and stone are both washed so that they are in high surface cleanness. The shakeout mode is strainer dragging, general products use extrusion mode, and caused lots of mortar was left over in sand.
- Complete machine discharging, without interference with loader's shoveling. (General products' shakeout swing arm tend to cause crash accident as the loader shoveling the sand.)

### 主要技术参数 / Product Advantages

各型号参数 Parameter/Model	THS10	THS20	ZSF30
筛分能力(T/H) Screening Capability(t/h)	10-20T/H	20-30T/H	30-40T/H
分石尺寸(mm) Stone size Screened(mm)		> φ5	> φ5
分砂尺寸(mm) Sand size Screened(mm)		φ1-φ5	φ1-φ5
搅拌车数量 Mixing Trucks Number	< 10	10-30	> 30
主机功率(KW) Power of main Body(kw)	7.5	7	5.5
主机重量(KG) Weight of main Body(kg)	2000	5000	4000
主机外形尺寸(mm) (长×宽×高) Dimensions(L×W×H)	6660*1200*3100	6360*1750*2600	4680*2220*1990

### 标准型洗车场砂石浆水回收流程图 Concrete Recycling Process Chart





## 塔楼式干粉砂浆生产线

TOWER TYPE DRY MORTAR PRODUCT LINE



塔式适合大规模生产，既可以生产普通砂浆也可以生产特种砂浆，生产品种很多，效率非常高，生产能力可达200t/h，运行成本低，产量较大，投资大，结构紧凑，占地面积较少，设备宏伟。

Tower type dry mortar product line is applied to mass production, for ordinary and special dry mortar. It can produce variety kinds of products and have high efficiency, which capacity can reach to 200T/H. lower operating cost, large productivity, big investment, compact structure and covering fewer floor area with magnificent structure.

塔楼式设备技术参数 Plant type equipment technical parameters

设备型号 Model	配套主机 Mixer	整机功率(Kw) Power	理论生产率(t/h) Theoretical capacity	占地面积(m <sup>2</sup> ) Floor area		设备型号 Model	配套主机 Mixer	整机功率(Kw) Power	理论生产率(t/h) Theoretical capacity	占地面积(m <sup>2</sup> ) Floor area	
GSW2000	SW2000	200	40	300		GSW2000	SW2000	200	40	400	
GSW3000	SW3000	240	60	450		GSW3000	SW3000	240	60	550	
GSW4000	SW4000	400	80	500		GSW4000	SW4000	400	80	600	
GSW6000	SW6000	800	120	700		GSW6000	SW6000	800	120	800	
GDW2000	DW2000	200	40	300		GDW2000	DW2000	200	40	400	
GDW3000	DW3000	240	60	450		GDW3000	DW3000	240	60	550	
GDW6000	DW6000	800	120	700		GDW6000	DW6000	800	120	800	

HZS(N)

2HZS(N)

YHZS

CTS

MP

GSW

## 阶梯式干粉砂浆生产线

LADDER TYPE DRY MORTAR PRODUCT LINE



阶梯式适合大规模生产，既可以生产普通砂浆也可以生产特种砂浆，生产品种很多，效率较高，产量较大，投资较大，占地面积大。

Ladder type dry mortar product line is also applied to mass production, for both ordinary and special dry mortar, More variety, high efficiency, large productivity, big reat investment, covering more floor area.

阶梯式设备技术参数 Ladder type equipment technical parameters

## 车间式干粉砂浆生产线

WORKSHOP TYPE DRY MORTAR PRODUCT LINE



适合小规模投资，主要适合生产特种砂浆。特点是投资少、占地少、产量低，生产品种较少。可安装于标准工业厂房内，是一种简单灵活的干混砂浆产品的生产线。

HZS(N)

2HZS(N)

YHZS

CTS

MP

GSW

## 车间式干粉砂浆生产线

WORKSHOP TYPE DRY MORTAR PRODUCT LINE



Workshop type dry mortar product line is applied to special dry-mortar with small scale investment with the characteristic of low investment, less floor area, small capacity and few variety. It is a simple and flexible product line which can be installed in standard industrial workshop.

车间式设备技术参数 Workshop type equipment technical parameters

	设备型号 Model	配套主机 Mixer	整机功率(Kw) Power		理论生产率(t/h) Theoretical capacity	占地面积(m <sup>2</sup> ) Floor area	
	GSW500	SW500	120		10	200	
	GSW1000	SW1000	150		20	300	
	GSW2000	SW2000	200		40	400	
	GDW1200	DW1200	150		20	300	
	GDW2000	DW2000	200		40	400	



## 单卧轴混合机

SINGLE-SHAFT MIXER



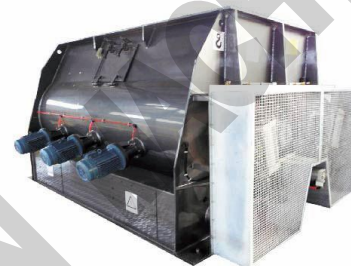
单卧搅拌装置  
Single-shaft mixing device



在线取样器  
Working sampling device

## 双卧轴混合机

TWIN-SHAFT MIXER



双卧搅拌装置  
Twin-shaft mixing device



飞刀装置  
Coulter device

主要技术参数表 Main technical parameters

设备型号 Model	全容积(L) Volume	整机功率(Kw) Power	整机质量(Kg) Weight	装载系数 Load factor	飞刀数量(个) Fly-cutter.(Set)
DW500	500	7.5	800	≤0.7	---
DW1000	1000	11-15	2000	≤0.7	---
DW2000	2000	18.5-37	3000	≤0.7	---
DW3000	3000	37-45	3500	≤0.7	4
DW4000	4000	45-75	4000	≤0.7	4
DW6000	6000	75-100	5000	≤0.7	6
DW10000	10000	100-150	8000	≤0.7	6

主要技术参数表 Main technical parameters

设备型号 Model	全容积(L) Volume	整机功率(Kw) Power	整机质量(Kg) Weight	装载系数 Load factor	飞刀数量(个) Fly-cutter.(Set)
SW500	500	7.5	1000	≤0.7	4
SW1000	1000	11-15	2500	≤0.7	4
SW2000	2000	18.5-37	3500	≤0.7	4
SW3000	3000	37-45	4000	≤0.7	4
SW4000	4000	45-75	5000	≤0.7	4
SW6000	6000	75-100	6000	≤0.7	6
SW10000	10000	100-150	9000	≤0.7	6

## 大型管理控制系统

LARGE-SCALE MANAGEMENT CONTROL SYSTEM



简易式控制系统  
Simple control system

全自动控制系统  
Automatic control system

HZS(N)

2HZS(N)

YHZS

CTS

MP

GSW

## 控制系统的优点 CONTROL SYSTEM ADVANTAGE

- 1、自动、半自动、手动三种工作方式使生产流程的控制更加自如，真正体现出控制方便。
  - 2、软件登陆和电子秤调校需要用户密码，有效的保证了重要生产数据的安全。
  - 3、自动脉冲式粉料破拱确保粉料均匀配料。
  - 4、搅拌过程中时间自动调整，减少了搅拌机的无效率运转。
  - 5、根据流量自动破拱和配料振动确保配料的速度。
  - 6、自动记录系统运行参数和状态的变化，确保系统的稳定和砂浆质量的追溯性，可随时查阅生产数据，可自行生成财务报表等。
  - 7、超秤扣秤、欠秤补秤、点动精称等提高了称量精度。
  - 8、配合比、计量误差、皮重报警功能有效的控制了不合格品的产生。
  - 9、设置配料、投料、卸料三个安全按钮。
  - 10、具有中文提示和系统快速恢复功能。
  - 11、实现无冲量（或称提前量）和；绿色冲量概念。
1. Three kinds of running form-automatic, semi-automatic and manual make the control of production process more freely, which really reflects convenient control.
  2. Password for software login and electronic scale adjusting, which ensures the safety of important production data.
  3. Auto pulse powder arch breaking device ensures powder well-distributed.
  4. The mixing time can be adjusted during production process, which can reduce inefficacy mixing.
  5. Automatic arch breaking according to flow and dosing vibrating can ensure dosing speed.
  6. Record running parameters and status changing automatically, make sure the stability of system and traceability of mortar quality. The user can consult production data at any time and create finance report.
  7. Subtract when exceed, complete when lack, scale with inching function can enhance the weighing precision.
  8. Mixing proportion, weighing error and tare alarming can reduce rejects.
  9. Set three safety button: dosing, feeding, and discharging.
  10. Own Chinese prompt, system quick recovery function.
  11. Make no pulse(lead) and green pulse come true.



## 配套设备 COROLLARY EQUIPMENT

根据客户的要求，为客户选择最合适的配套设备。 According to different clients' requirement, we choose the best device for them.



制砂系统 Sand making system



制砂系统 Sand making system



烘干系统 Drying system



除尘系统 Dust collecting system



除尘系统 Dust collecting system



烘干系统 Drying system



筛分机 Screening machine



筛分机 Screening machine



筛分机 Screening machine



敞口包装机  
Packing machine for sewing bag



阀口包装机  
Packing machine for valve bag



叶轮包装机  
Impeller packing machine

## 施工设备 CONSTRUCTION EQUIPMENT

干粉罐 Dry mortar storage silo



MPS55喷浆泵 MPS55 Spraying pump

## 发货区 THE DISPATCH AREA



## 发货区 THE DISPATCH AREA













## 服务承诺

### SERVICE PROMISE



- 我们定期为服务工程师提供技术、服务、礼仪等全面的培训，使服务队伍的各项技能得到持续提升，让每位工程师都成为行业技术专家。  
We will train the engineer about technology, service, etiquette and so on regularly, which can promote the service people's all skills and ensure everyone become to the industry expert.
- 以客户为中心，从售前、售中、售后全方位为您提供优质、高效的服务。  
We insist "Customer-focused", we supply the high quality and efficient service from pre-sales, sales and after-sales.
- 如遇到问题，请及时拨打服务热线 0532-89659612 我们为您提供全天候、全方位的咨询服务。接到您的电话后，及时派员与您进行联系沟通，迅速为您排除故障，使您满意。  
Any problems, please call our service hotline 0532-89659612, all-round consultation service will be prepared for you. After your call, we can arrange the expert to communicate with you and help you solve the problems satisfactorily.

## 售前 Pre-Sales

担当您的技术助理，根据现有土地条件和施工状况及特殊要求，为您量身定制最佳施工方案。

Work as your technical assistant, special design for you according to your land, construct condition and other requirement.



## 售中 Sales

1. 根据合同进行设备的安装调试工作；  
Install and debug equipment according to contract.
2. 服务工程师协助您进行首次开机准备工作并为您进行测试；  
After sales engineer will help you do prepare works for the first start up and debug for you.
3. 现场免费提供操作及维修人员的培训，保证操作人员掌握设备的使用方法、工况要求，产品的正确保养方法，产品常见故障的正确诊断和排除方法。  
In the working site, we supply operation and serviceman training for free. Besides, we can make sure operator can get hold of usage, working requirement, correct maintain way and diagnose remove correctly when machine broke down.

## 售后 After-Sales

1. 对设备定期巡检，提醒客户保养维护设备；  
Inspect machine regularly, remind user maintain machine.
2. 控制程序终生免费升级；  
Update control system for free.
3. 保修期内产品发生故障时，免费上门维修，保修配件免费送货上门；  
We will visit and repair for free when machine break down during warranty period. Guarantee spare parts also free delivery to your door.
4. 保修期外，提供终身有偿服务，产品终身供应配件。  
Out of warranty period, we can supply paid service and spare parts all time.

客户至上、敏捷有效、合作共赢

Customer is God, quick and efficient, cooperation and win

为客户创造价值才能为自己创造价值

Creating value for customer equal to for ourselves

简捷、全面、可靠、积极、主动、优质、及时

Simple and direct, comprehensive, reliable, positive, initiative, high quality, timely